

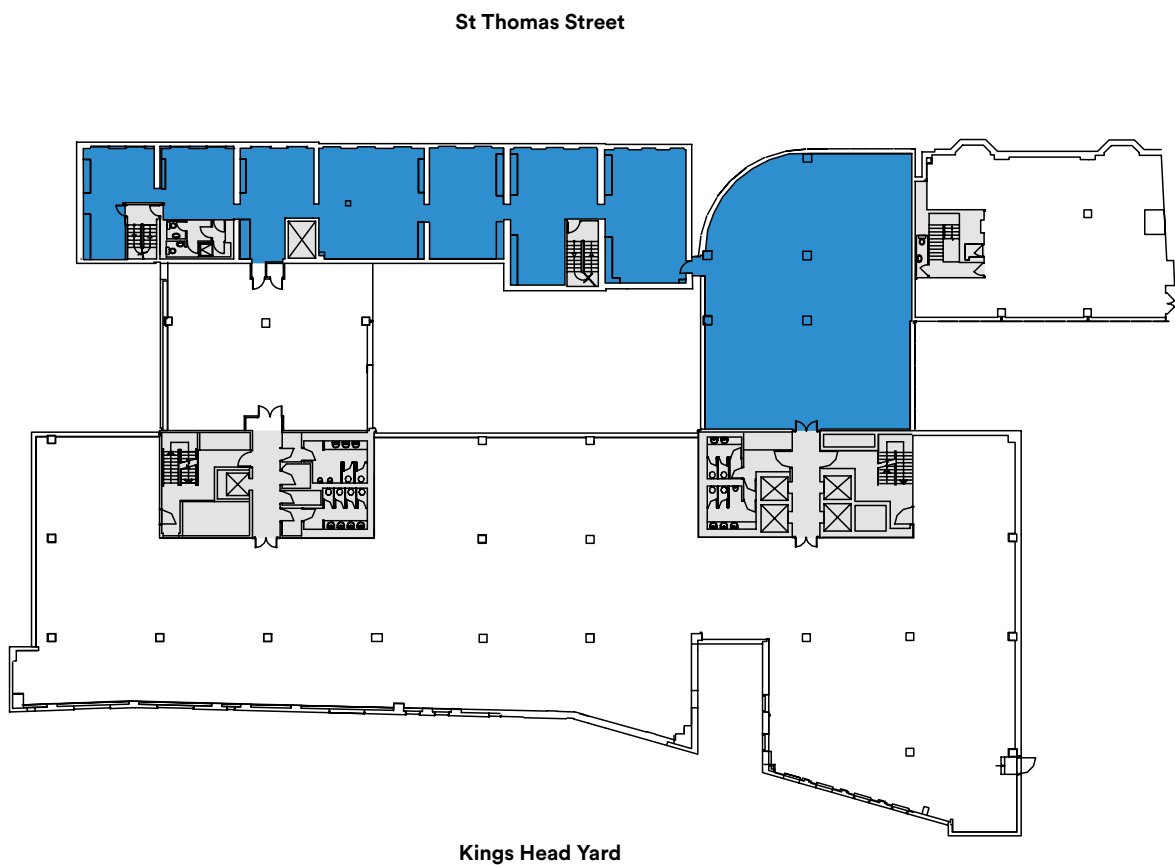
ST THOMAS STREET LONDON SE1

4,883 – 25,765 Sq Ft  
Offices to Let



## Part First Floor Plan

5,762 Sq Ft (535 Sq M)



For indicative purposes only (not to scale).

ST THOMAS STREET LONDON SE1

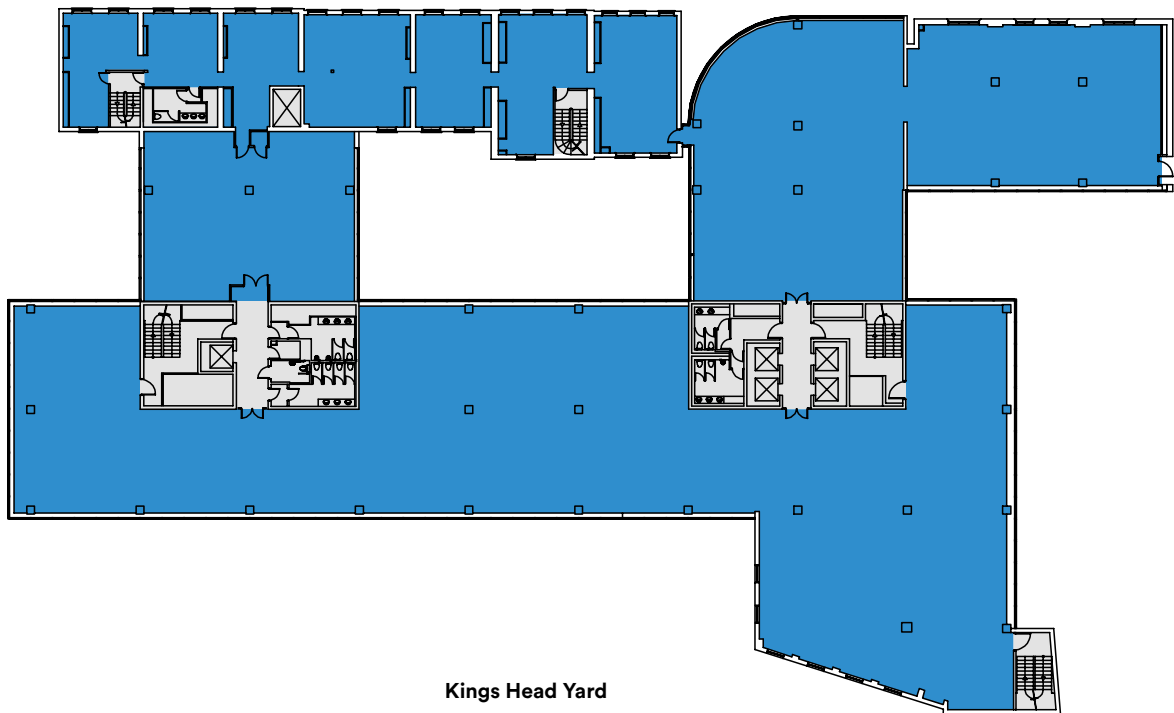
4,883 – 25,765 Sq Ft  
Offices to Let



## Second Floor Plan

20,003 Sq Ft (1,853 Sq M)

St Thomas Street



Kings Head Yard



For indicative purposes only (not to scale).